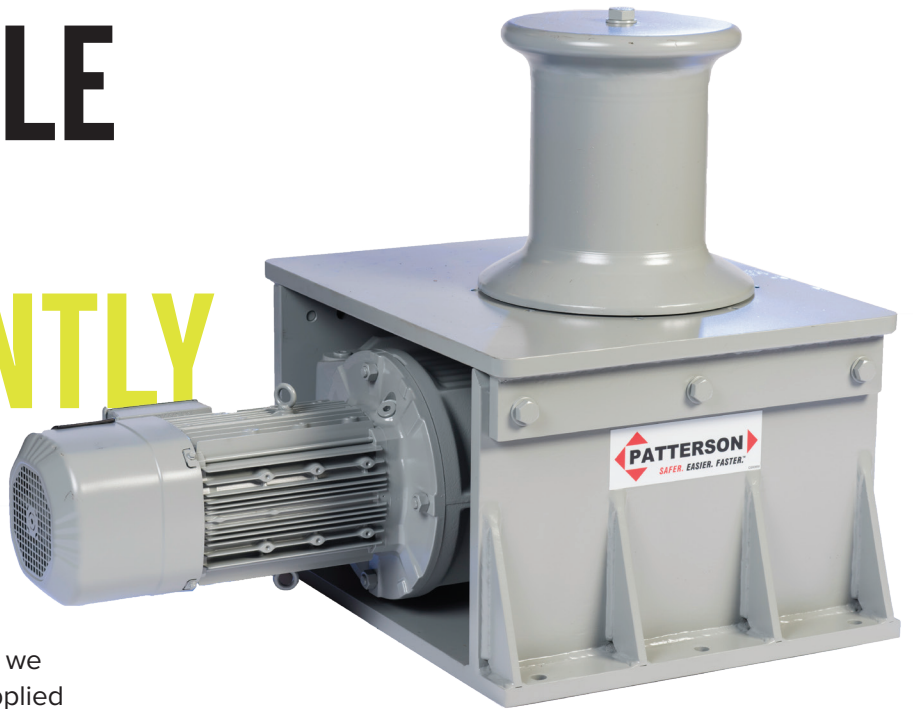




RIGHT ANGLE CAPSTAN INTELLIGENTLY DESIGNED



Robust, Reliable, Innovative. These are ideals we follow when it comes to design, and we've applied them all to the Patterson Right Angle Capstan. We've evaluated the common issues with capstans including gearbox failures, oil leaks, and moisture problems, and asked ourselves how we can do it better.

By utilizing an oversized gearbox, secondary external bearings, and water tight components, we've created a capstan that requires minimal maintenance and is designed for maximum longevity. Plus, with the addition of an external spherical roller bearing, your robust Patterson Capstan can be up and running for years to come, while being leak free and hassle free.

It all adds up to less downtime, and more savings over the life of the product.

Key Features

- Reinforced Washout Ready Housing
- External Spherical Roller Bearing
- Triple-Lip Contact Seals
- IP66 Rated Motor

[More Details >](#)



RIGHT ANGLE CAPSTAN

Performance Data

Model* (RAC)	5.4 10-35	5.4 12-42	7.5 10-35	7.5 12-42	10 10-35	10 12-42
MOTOR	5.4 hp	5.4 hp	7.5 hp	7.5 hp	10 hp	10 hp
HEAD DIAMETER	10"	12"	10"	12"	10"	12"
STARTING PULL	14,500 lbs	12,226 lbs	17,282 lbs	14,623 lbs	19,611 lbs	16,594 lbs
RUNNING PULL	4,982 lbs	4,216 lbs	6,913 lbs	5,849 lbs	9,339 lbs	7,902 lbs
RUNNING SPEED	35 fpm	42 fpm	35 fpm	42 fpm	35 fpm	42 fpm

*Definition: Right Angle Capstan 5.4 Horsepower – 10" Diameter Head – 35 Feet Per Minute

QUALITY + DURABILITY
**YOU CAN
DEPEND ON**

